



**Research**

Alex de Rijke explores  
Matthew Barnett  
Howland's Cork House

**Forum**

Dinah Bornat, Nile Bridgeman,  
Patrick Lynch, Isabel Allen,  
Mary Arnold-Forster, Katie Kerr,  
Vicky Evans, William Smalley,  
Tom Lewith

**Works**

Junya Ishigami, Pricegore and  
Yink Ilori, Estudio Cano Lasso,  
Wilkinson Eyre, Studio Seilern

**Focus**

Envelope: Carmody Groarke,  
Squire & Partners

**Awards**

Schueco Excellence Awards for  
Design and Innovation 2019



# Knighton Place

Smooth and textured sandstone clads a residential project in London by Squire & Partners

## Photos

James Balston

Designed by Squire & Partners, Knighton Place is a new-build housing development on Yeoman's Row in Knightsbridge, London. The four-storey scheme is intended to evoke the craft and artistry of neighbouring Victorian houses through subtle design variations between residences, and the use of sandstone as the primary facade material.

Two types of sandstone were specified: a Cove Red quarried in Scotland and employed in both smooth and textured finishes; and a pale grey Dunhouse Blue, quarried in Lancashire and used for the window and entrance reveals. "Cove Red was chosen for its tonal warmth and distinctive markings", explains the architect. "The striking rough texture was created by hand-tooling a broached finish. This contrasts with the smooth Dunhouse Blue and provides visual depth and variety across the facade. Precise CNC detailing to the parapet course adds a further layer of richness."

Bespoke projecting and recessed windows provide additional surface articulation and help to distinguish the individual residential units. The dark bronze-coloured anodised trims are CNC machined from solid aluminium, with tapered profiles and drip rebates. All fixings are concealed and finished to match the metalwork.



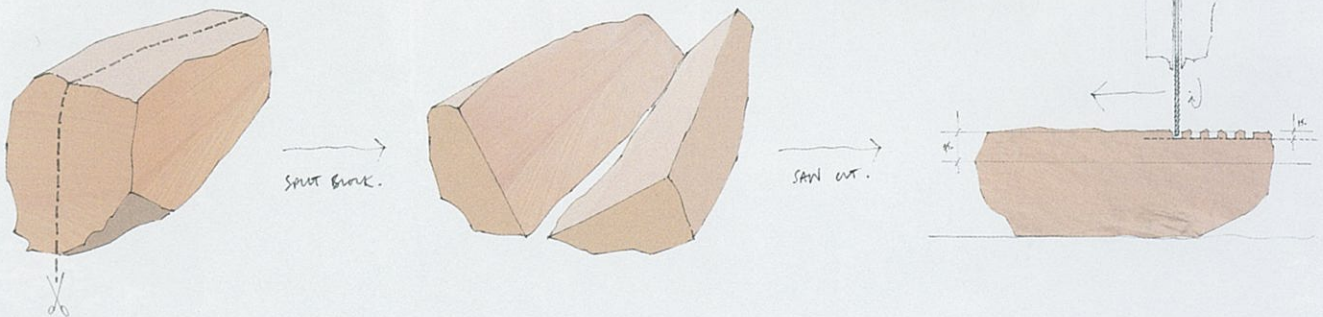
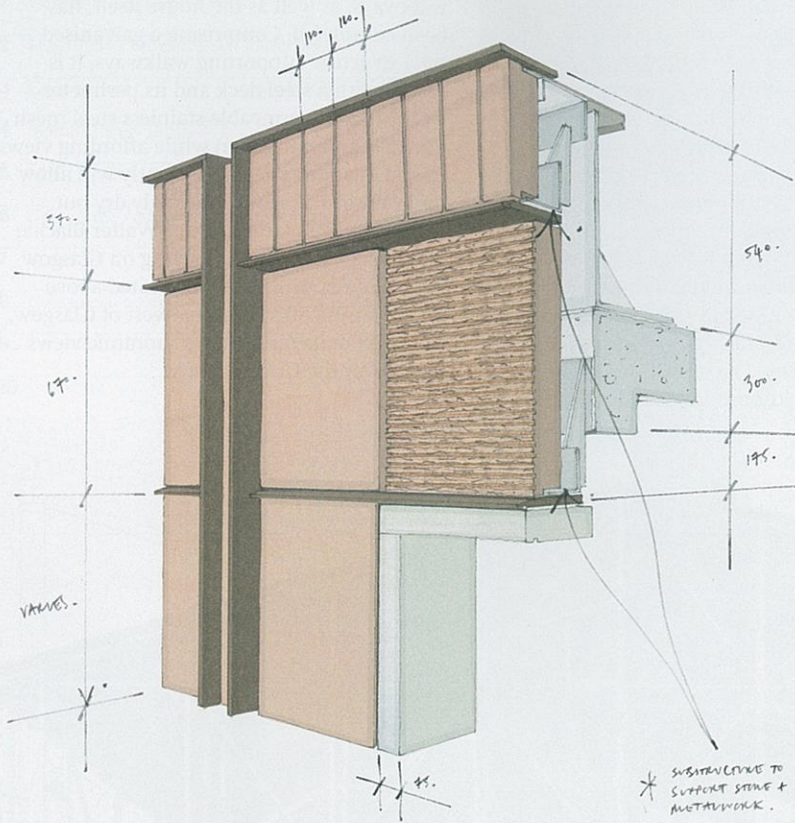
## Above

Red sandstone forms the main cladding material on Yeoman's Row, with pale grey sandstone articulating the entrances and window reveals.

## Left

Projecting and recessed bronze-famed windows are intended to complement the local vernacular.

# FOCUS



Distinctive floor grilles, which are located within the courtyard gardens to the rear and provide ventilation to the lower floors, are made from individually welded and powder-coated steel plates. Adopting a geometric pattern based on the fretwork used inside the houses, the bespoke metalwork is intended to create a cohesive language between the inside and outside.

Ground-level railings makes reference to local metalwork. Traditional ornate finials have been exchanged for a simple tapered head profile that is more in keeping with the aesthetics of the scheme. /

#### Top left

Detailed axonometric sketch section through front facade showing stone cladding panels, as well as primary and secondary support structure.

#### Top right

CNC-cut parapet course panels; sawn-cut block of red sandstone.

#### Above

Sketch showing cutting and finishing process for textured stone cladding.

#### Project team

**Architect**  
Squire and Partners  
**Structure**  
Michael Barclay  
Partnership  
**Services**  
Hoare Lea  
**Quantity surveyor**  
Beadmans  
**Interior designer**  
Finchatton  
**Contractor**  
Knight Build (phase 1),  
ODP (phase 2 and 3)

#### Selected suppliers & subcontractors

**Stonework**  
Realstone (Cove Red),  
Dunhouse (Dunhouse  
Blue)  
**Metalwork**  
Mather & Smith